

THE LEADING PROVIDER OF DEMAND RESPONSE RESOURCES IN THE UNITED STATES

NAPP's Advanced Metering Solutions

NAPP's Metering Solutions Provide the most Advanced Technology for Revenue Generation

- Offers the latest in metering and communications with fifteen-minute and one-minute interval measurement capabilities
- Provides required electric usage reports updated hourly.
- 24/7 access to electric usage information via internet reporting.
- Maximizes DR revenues and enables you to better manage utility costs.

■ NAPP's Metering Features

IDR Meter

The Interval Data Recorder (IDR) meter is a device that measures the amount of electrical energy that is supplied to a business and/or equipment. Demand is measured in watts, usually recorded over a 15-minute time period. The utility requires IDR meters for all DR customers. For this reason, it is highly recommended that clients have NAPP metering installed "behind" the utility meter. (NAPP's Short Notice On Call Program, requires a NAPP meter.)

PIB/KYZ

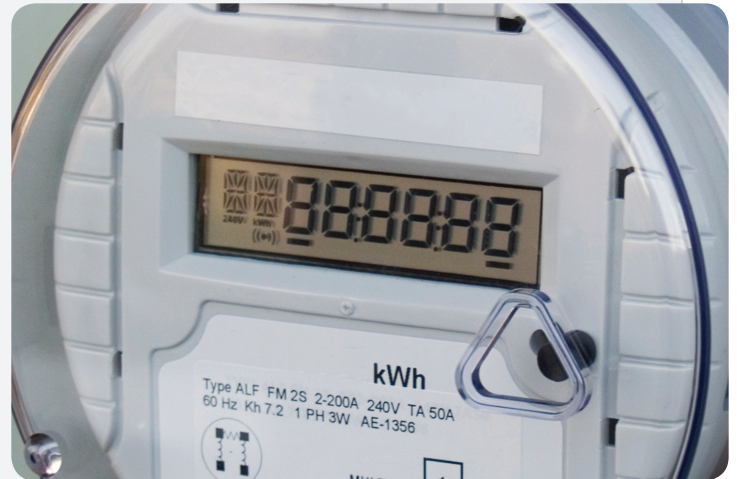
Ordered from the utility, the Pulse Interface Box (PIB) or KYZ connection is the point where the utility provides the electric pulse and NAPP receives the pulse, which is then transmitted to the NAPP meters.

NAPP Meter

NAPP's meter logs KW demand and records in one-minute intervals. Data is uploaded to NAPP's main server in one of three ways: phone line (dial-up), cellular (wireless dial up), or Ethernet (LAN).

Internet Access

NAPP clients have access to their demand load profile via the internet 24 hours per day.



Data Server

The data (KW pulses) from the NAPP meter is uploaded to the data server. The server hosts an energy load profile program, and clients with NAPP meters have access to the data that is inserted into this program.

Energy Load Profile Program

This program charts and analyzes energy usage data. This important data enables clients to monitor DR performance during events, test and evaluate DR commitment levels, manage utility costs, and maximize DR energy revenue opportunities.



A LEADING PROVIDER OF DEMAND RESPONSE RESOURCES IN THE UNITED STATES

Generating New Revenue with Demand Response

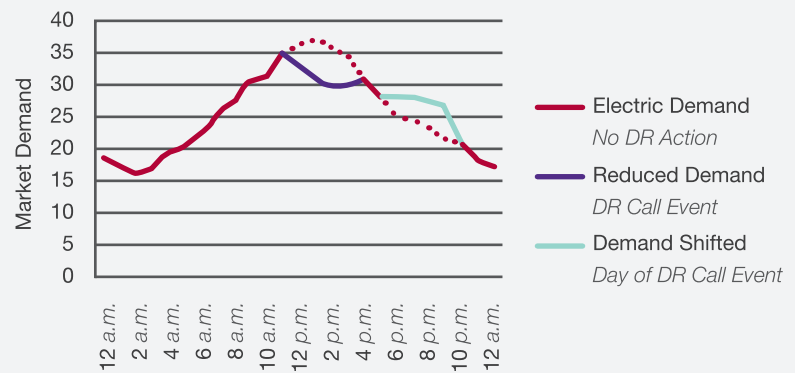
Demand Response Overview

Demand Response is the temporary reduction of electrical usage by a customer for an economic or emergency response. DR programs are designed to contribute to energy load reduction during times of high prices, critical peak demand, or supply shortfalls on the electric grid.

Customers participating in a DR program earn recurring monthly revenues for their availability to reduce their demand – essentially offering their unused capacity as a new and reliable resource to the grid.

Customers' DR capacity revenues are paid quarterly whether or not they are called upon to reduce energy consumption.

DR Reduces Critical Peak Demand



About NAPP

North America Power Partners is a leading provider of Demand Response resources across the United States. We enable our customers to participate in a range of programs including Capacity, Reserves, and Self-Scheduled Energy. Our DR solutions include advanced metering with web-based reporting tools for all our customers. NAPP provides engineering audits, automation, and controls for customers who want to automate their demand response.

New Jersey

308 Harper Drive, Suite 320, Moorestown, NJ 08057
(856) 439-0800 or 1-(888) 476-7764

California

400 Continental Blvd, Suite 600, El Segundo, CA 90245
(310) 426-2966

Benefits of NAPP's Demand Response Programs

- Revenue** *Create a significant recurring new revenue stream for your organization*
- Grid Reliability** *Reduce the likelihood of a blackout in your community*
- Environmental** *Offset the need for new generation plants; reduce GHG emissions*
- Usage Reports** *Access valuable electric usage reports every hour to monitor energy use and manage utility costs*

NAPP works with its customers to identify the portion of electric load at each facility that will be reduced – aligning customers' objectives to generate revenues while limiting impact on facility operations. Ways that facilities reduce their energy usage include idling equipment, shutting down processes, raising thermostats, utilizing building automation and energy management systems, or reducing lighting. NAPP will provide the metering technology and transaction systems required to participate in our DR programs.

